



# GMT MONTHLY MEMBERSHIP PROGRESS REPORT

Results as of: 5/31/2018

Multiple District 27

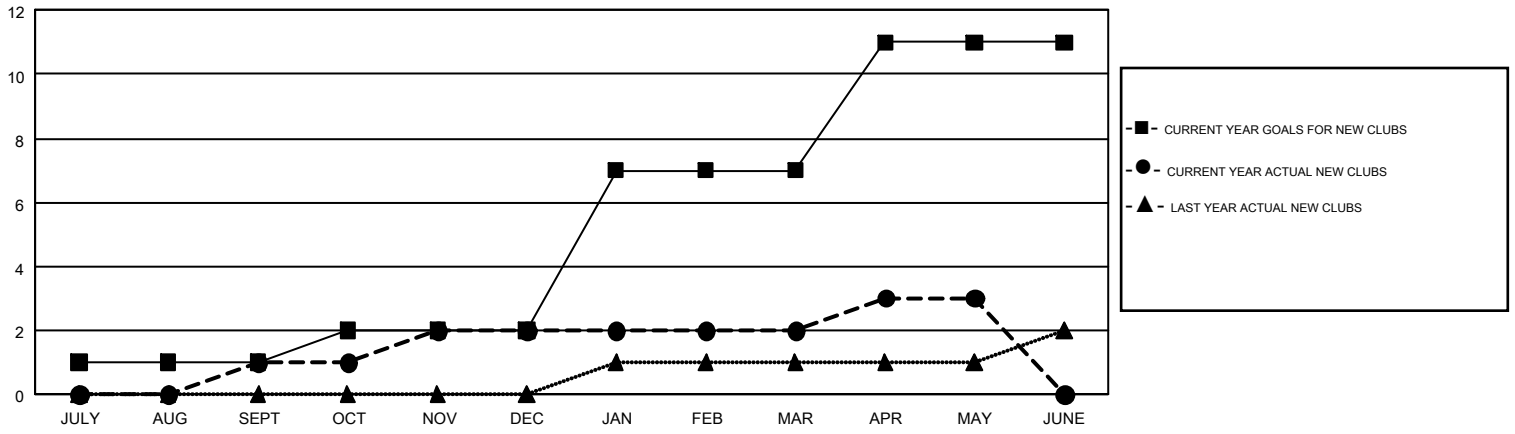
LOCATION: WISCONSIN

GMT: MICHAEL MOLEND A

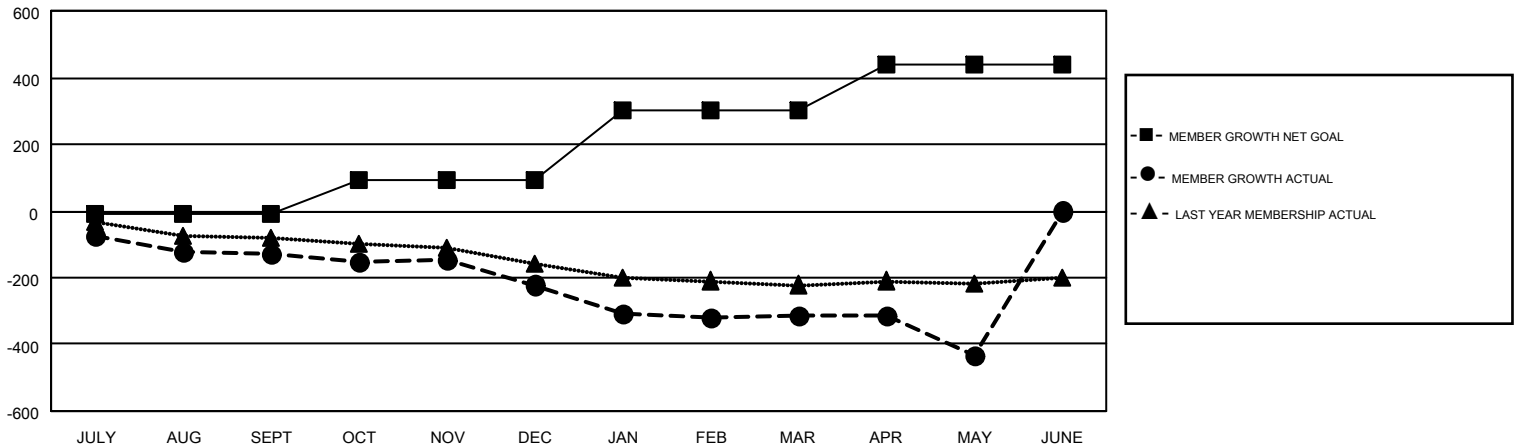
GMT CA 1

Clubs				Members			
RESULTS FOR 2017-2018				RESULTS FOR 2017-2018			
QUARTER	NEW CLUB GOAL	NEW CLUBS	DROPPED CLUBS	QUARTER	MEMBER GROWTH NET GOAL	MEMBER GROWTH ACTUAL	DROPPED MEMBERS ACTUAL (including transfers)
JULY/AUG/SEPT	1	1	1	JULY/AUG/SEPT	-11	350	433
OCT/NOV/DEC	1	1	3	OCT/NOV/DEC	103	381	446
JAN/FEB/MAR	5	0	1	JAN/FEB/MAR	210	341	399
APR/MAY/JUNE	4	1	2	APR/MAY/JUNE	135	227	325

GOALS AND ACTUAL NEW CLUBS CUMULATIVE



GOALS AND ACTUAL MEMBERS CUMULATIVE



DROPPED CLUBS: 7	341 CLUBS OF 533 ADDED 1 OR MORE NEW MEMBERS	<u>GENDER DISTRIBUTION</u>	
<u>DROPPED MEMBERS</u>		MALE	13,634 (76.83%)
DECEASED	233	FEMALE	4,111 (23.17%)
CLUB CANCELLED	45	TOTAL FAMILY UNIT MEMBERS 3,433	
OTHER	1,324		
TOTAL	1,602	FAMILY MEMBERS PAYING HALF DUES 1,749	
<a href="#">CLICK HERE FOR CUMULATIVE MEMBERSHIP DATA</a>		TOTAL FAMILY UNIT MEMBERS 3,433	
		FAMILY MEMBERS PAYING HALF DUES 1,749	